

# **Airmover Revit Model Features**

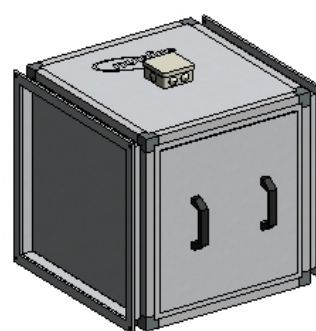
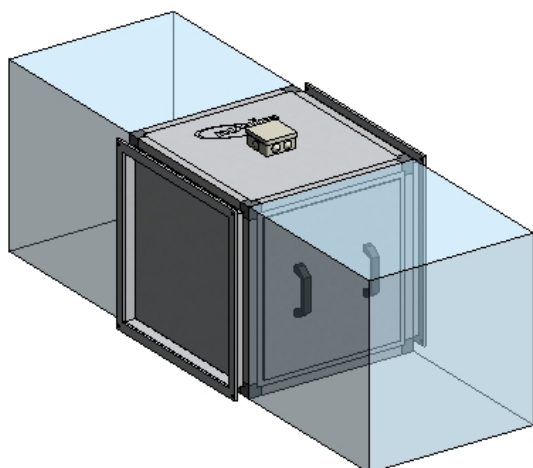
1. The model uses a type catalogue so all sizes of the Airmover fan range can be inserted using the same .rfa file (see Read Me file attached for further info)

The Airmover.rfa model attached includes the following options in the Model Properties Category in the Properties Window

Model Properties	
Show Access Clearance	<input checked="" type="checkbox"/>
Room Side Silencer	<input type="checkbox"/>
Atmosphere Side Silencer	<input type="checkbox"/>
Room Silencer Length 900m...	900.0
Atmosphere Silencer Length ...	900.0

2. 'Show Access Clearance' allows you to show or hide the access clearance transparent area of the model.

**Note:** The access clearance areas will still affect collision detection when turned off. Access is available from both sides of this unit although only one side is compulsory



3. You can also choose which matched silencers to use using the tick boxes below. The choice of silencer lengths we offer are: 900mm & 1200mm.

Using lengths other than these in the boxes will remove the silencer from both the view and the schedules.

Room Side Silencer	<input checked="" type="checkbox"/>
Atmosphere Side Silencer	<input checked="" type="checkbox"/>
Room Silencer Length 900m...	1200.0
Atmosphere Silencer Length ...	900.0

